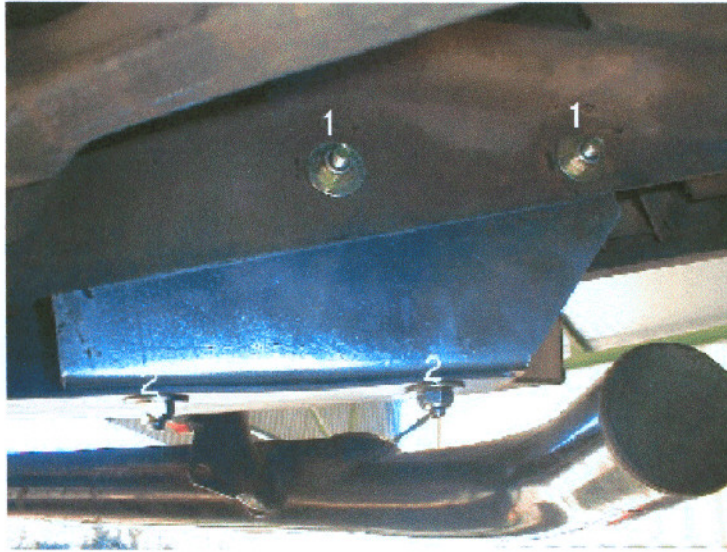


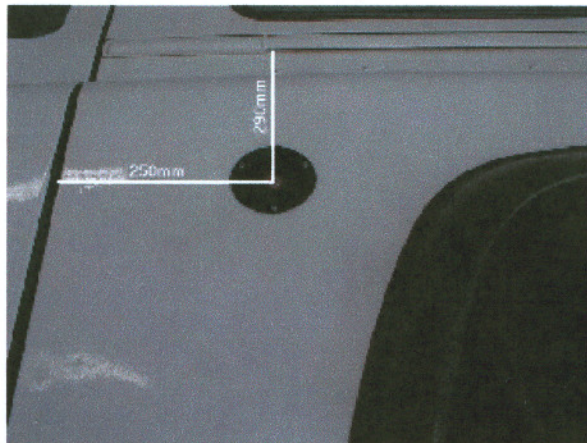


Fitting Instructions for
Left Hand Side FuelTank FRLR40
Suitable for:
Landrover 90

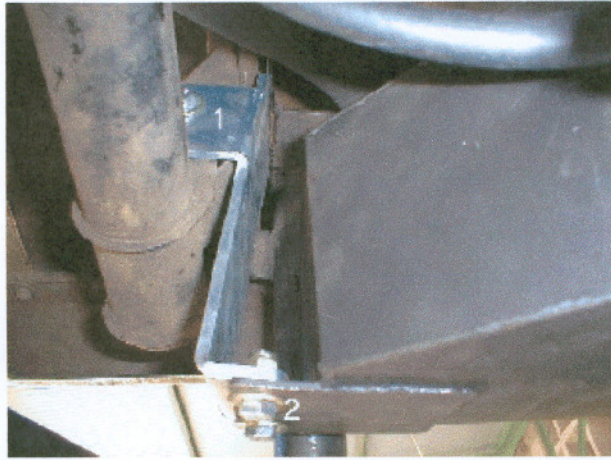
- 1 The front bracket is mounted to the holes in the chassis (No 1). The front of the tank is then mounted to the front bracket at No 2.



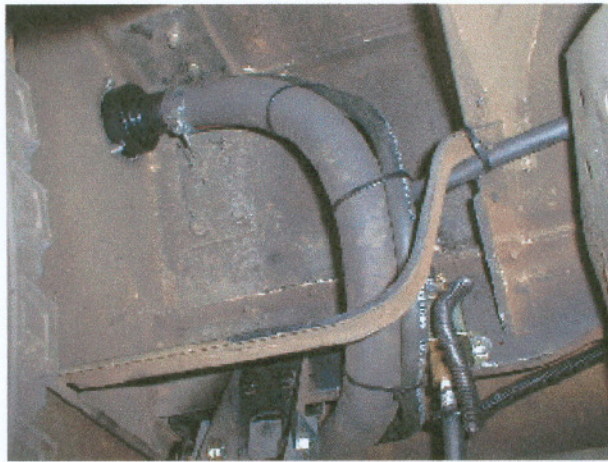
- 2 A new hole is drilled for filler neck to 76mm. See measurements. It is placed below the spot welds on body.



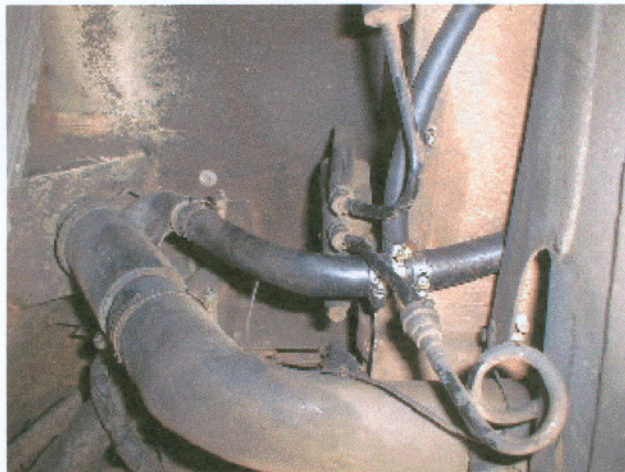
- 3 The back bracket (No 1) is mounted with M8 x 30 bolts and nuts to the round tube running from the chassis towards the body. Mount back of tank to bracket No 1 with M10 x 30 bolt and nuts as shown at point 2.



-
- 4 Route the filler pipe from tank to new filler neck as shown and secure with cable ties.



-
- 5 The outlet pump must be connected up to the breather of the main tank with steel T-piece supplied. Make sure 8mm pipe is clamped down to chassis with cable ties.



-
- 6 Connect up tank outlet banjo fitting to fuel pump outlet.



-
- 7 If the vehicle has a running board, it needs to be modified at front and back mounting. If it is only a fold down step modification is not necessary.



-
- 8 The figure below shows the tank in position and running board modified to accommodate the tank.



-
- 9 Make sure all clamps, bolts and nylock nuts are tightened.

-
- 10 Connect the pump to switch and test.